

Alaska Department of Fish and Game

Habitat Section
Southeast Region



113-51-10040 Tributary 2

ADDITION

Water body name:

Quad: Sitka C-4

Upper Reach Latitude: 57.528265 **Longitude:** -135.176623

Lower Reach Latitude: 57.528233 **Longitude:** -135.177455

Survey date: 8/4/2023

Species & Lifestage:

Survey crew: DK, FC

Findings: We surveyed this uncataloged stream using a backpack electrofisher, minnow traps, and a GPS and captured juvenile coho salmon and Dolly Varden. The stream flows into a pond upstream of the culvert. Various channels flow into the pond coming from several directions; investigation showed many ended up seeping from hillsides further upstream. The main channel of this tributary continued to flow north along the road (Table 1; Figures 1–3).

Recommendations: Add this uncataloged stream to the anadromous waters catalog for rearing coho salmon up to waypoint 474 (Figure 4).

Nomination: Pending

Table 1.—113-51-10040 tributary 2 survey data.

Waypoint	Latitude	Longitude	Notes	Stream Width ft	Stream Substrate	Habitat Features	Gradient %	Sample Effort	Sample Results
442	57.528194	-135.176692	Minnow trap soaked in pond 40' upstream of 2' CSP, poorly aligned with sediment wedge at outlet and significant rusting on bottom inlet. Upstream the stream becomes ponded, fish captured in ponded area upstream.	4-6	Small Gravel Sand		0-1	MT	18 CO 22 DV
472	57.526534	-135.177319	On stream that parallels road slightly upstream; heads back into woods and has slightly wider channel and lower gradient compared to upstream. Still very low water. Some shockable pools; no fish present.	1-2	Fine Organic		2-4	EF	No Fish
473	57.526850	-135.177668	Small low-water stream trickles into large beaver pond. Return to set minnow traps.		Fine Organic		0-1	Not Fished	
474	57.528269	-135.176676	Returning to electrofish upstream. 1-yr CO capture.	4-6	Fine Organic Small Gravel		0-1	EF	1 CO
475	57.528262	-135.176426	Main inlet to small pond flows from wooded area and becomes slightly widened with some small gravel before seeping from hillside at current low water. Some small but decent pools for electrofishing; only DV fish capture.	2-4	Fine Organic Small Gravel		1-2	EF	3 DV

Table 2.–Continued. [Click here to enter text.](#)

Waypoint	Latitude	Longitude	Notes	Stream Width ft	Stream Substrate	Habitat Features	Gradient %	Sample Effort	Sample Results
476	57.527951	-135.176545	Low-water seep emerges from hillside which steepens in the upstream direction. Some moss channels just upstream that may have water at higher flows. Water too low to effectively electrofish at current flow.	1-2	Fine Organic		6-8	Not Fished	
539	57.526891	-135.177299	Throwing minnow trap in ponded water next to the road. Connected to small channel on the uphill side of the road. Possible head of beaver complex.	50+	Fine Organic		0-1	MT	No Fish



Figure 1. Upstream at waypoint 442.



Figure 2. Downstream at waypoint 442.



Figure 3. Coho salmon and Dolly Varden caught at waypoint 442.

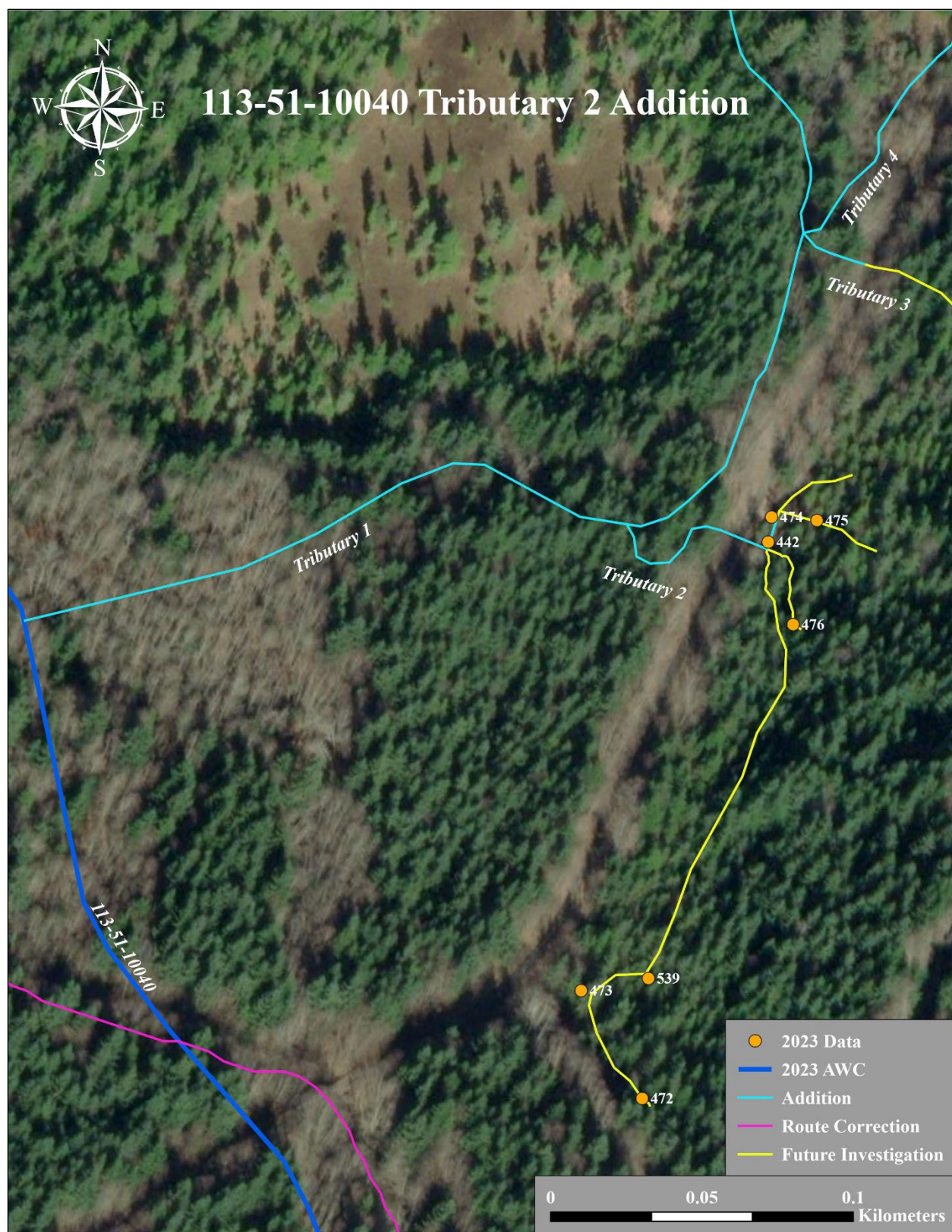


Figure 4. Stream No. 113-51-10040 Tributary 2 addition map.